



# SCHEMATICS

CUSTOMER SERVICE  
**1-800-446-1071**

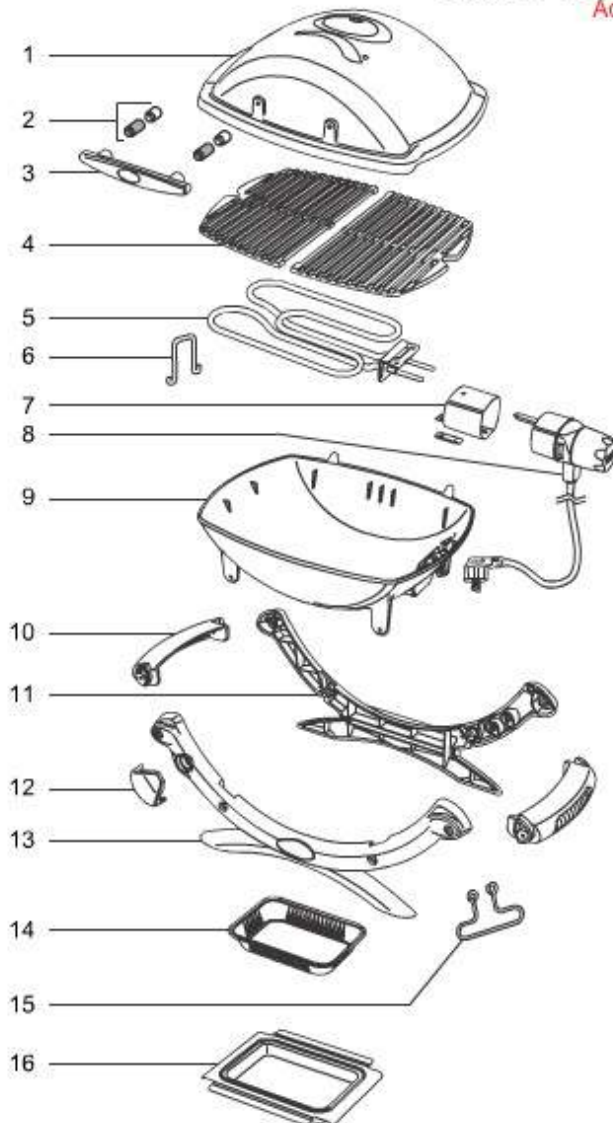
Central Europe / Electric / Weber Q (2014-2016)

[VIEW ALL](#)

MODEL #: 52020079 DESCRIPTION: WEBER Q 1400 DARK GRAY (2014) (CENTRAL EUROPE)

[Print Schematic](#)

**Weber Q® 1400 Electric Euro**  
Additional Parts



08.13

SEQ	DESCRIPTION	PART#
A	Literature Kit, Q 1400/2400, Germany/Austria '14 OUS	57630
W	Hardware kit, Q 1400, export '14	85367
W	Hardware, leg frame, Q 100/1000/200/2000, export	66544
W	Hardware, hinge, Q series, export	66543
W	Hardware, cookbox/frame, Q 1000/2000 series, export	66575

1	Lid assembly, Q1400, dark gray, export	66813
1	Lid assembly, titanium, Q 100/1000 series, export	66537
1	Lid assembly, Q 1000, maroon '14	69952
1	Hardware, hinge, Q series, export	66543
2	Lid handle spacers, Q 1400, export	66814
3	Hardware kit, Q 1400, export '14	85367
4	Porcelain enameled cast iron cooking grate, Q 1400, export (qty 2)	66593
5	Heating element, Q 140/1400, export	66631
6	Retainer for heating element, Q 1400	66063
7	Mounting bracket sleeve, Q 140/1400/240/2400, export	66630
8	Controller, 220v, Q 140	65629
9	Cookbox, Q 140, black, export	66613
9	Hardware, cookbox/frame, Q 1000/2000 series, export	66575
10	Side handle, export	66651
11	Rubber tabs, export	66673
11	Hardware, leg frame, Q 100/1000/200/2000, export	66544
11	Rear leg frame, black, Q 1400, '14 - export	65074
12	Logo plug, black, Q 1400/2400	66572
13	Front frame, black, Q 1000 series, export	66540
13	Rubber tabs, export	66673
13	Hardware, leg frame, Q 100/1000/200/2000, export	66544
14	Aluminum drip pans - small	6415
15	Wire hanger, Q 140/1400, export	66632
16	Catch pan, Q 100, export	66629
410	Literature Kit, Q 1400/2400, Germany/Austria '14 OUS	57630
470	Hardware, leg frame, Q 100/1000/200/2000, export	66544
470	Hardware kit, Q 1400, export '14	85367
470	Hardware, hinge, Q series, export	66543
470	Hardware, cookbox/frame, Q 1000/2000 series, export	66575

35 Items Found

[SCROLL TO TOP](#)

[View All](#)